

Arbour House School

KS5 Prospectus



supporting **YOUR** future

15-17 Glendinning Avenue
Weymouth
Dorset
DT4 7HQ
01305 781400

Maen
Maen Gardens
Off Culliford Road North
Dorchester DT1 1QQ
01305 490130

arbouradmin@potens-education.co.uk

Welcome to Arbour House Sixth Form

Arbour House Sixth Form provides a bespoke education for students aged 16-18 years with ASD related difficulties, social and communication needs,

The Sixth Form has its own suite of rooms, furnished and equipped to a high standard. These could be rooms at our Weymouth site or at our Dorchester site, depending on what is deemed in the student's best interests.



We offer all students the opportunity to engage in their local community and to develop positive and trusting relationships with their peers and staff. We give students choices, the ability to contribute with confidence, to be heard, and to feel valued.

We want students to have a positive experience in a safe and nurturing environment where they can achieve to the very best of their ability and we take into account individual strengths and interests and support students to work towards their own goals and aspirations.

We believe every student is special and our team of experienced staff support them on their own unique journey with care, commitment and empathy.

Our Aims

- To adopt a student-centred approach and empower students to contribute to their own learning experience.
- To tailor to meet the EHCP and well-being needs of our students.
- To inspire learning in creative ways to promote students' engagement, progress and personal development.
- To work with families, professionals, and other relevant partners to ensure Sixth Form transitions are as seamless as possible.

What Do We Offer? – Our Bespoke Provision

All students follow a core curriculum to support the acquisition of basic skills for life. They can access weekly 'Creative Curriculum' sessions, providing them with the opportunity to explore wider topics or interests alongside pupils in the main school. This enhances their own Spiritual, Moral, Social and Cultural development and their understanding of Fundamental British Values in a creative, collegiate and hands on, practical way.



The Core Curriculum provision can be enhanced with wider opportunities for learning to ensure students develop greater independence, prepare for post 6th Form transitions, and are equipped with the confidence and skills and to take their place as contributing and valued members of their community.

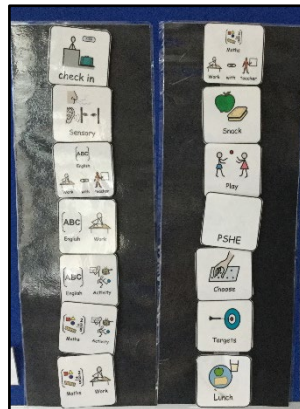
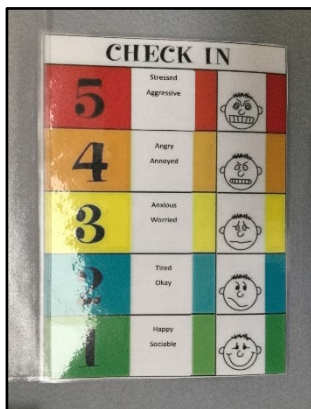
Students' individual timetables within this overarching framework are bespoke to meet their unique special educational needs and Education, Health and Care Plans. Students also have individual Thrive Action Plans to support the development of their social and emotional resilience and well-being.

Our Personalised Approach

Some students require additional sensory integration time, a specific sensory diet, further opportunities for occupational therapy, or speech and language support.



Others may need visual timetables, PEC's, use of a breakout room, a quiet space, or an individualised learning environment for example.



Arbour House promote equality and diversity and ensures that all students are provided with what they need to experience personal growth, success and a sense of well-being.

Each student's unique requirements
are embedded into their individual
learning programmes.

All students have a Positive Behaviour Support Plan. This details what works well for individuals, what their triggers may be, and how best to support them in times of anxiety, stress or difficulty.

These are written together with our Positive Behaviour Support Facilitator, students, their parents/carers and any associated professionals.

They are reviewed regularly to ensure they best meet students' needs.

The Sixth Form Centre works in a multi-agency way and values the input of other professionals to ensure that support for students is robust and cohesive.

Our Qualifications and Extended Learning Opportunities

Our English and Maths qualifications are accredited through Edexcel and are available at a range of learning levels, from Functional Skills Entry Level 1 to GCSE's. ICT qualifications in Digital Skills are also available for suitably skilled and interested students.

All students follow a Skills for Life orientated curriculum, with units of work in Independent Living Skills, Employability and Preparation for Adulthood at the core of post-16 provision.

We offer a range of academic and vocational learning opportunities via links with Weymouth College, Employ My Ability, Dorset Abilities, Rylands Farm, Dorset Wildlife Trust, RSPB and other local community and business partnerships.



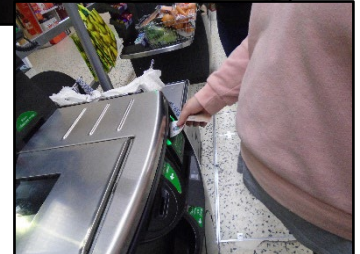
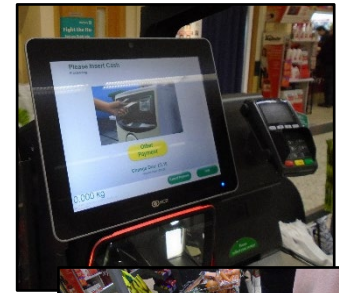
All Programmes of Study are planned and delivered at a learning level appropriate to each student's own needs and abilities.

Individualised programmes take into account students' aspirations and particular interests. Students' timetables can also include special interest time, volunteering, social enterprise and personal study for example.

Learning in the Community

All students are supported to access the local community regularly - to visit shops, use the library, utilise leisure facilities like the gym, swimming pool or outdoor education centre, participate in local services, classes or events, volunteer, or simply to benefit from our coastal location!

We aim to make our learning as relevant as possible to students' lives and we take full advantage of opportunities to learn outside the classroom.



This ensures that learning is purposeful, functional and can be applied to real life situations.



It also supports the development of travel training skills and students' progression towards independent living.

Other Useful Information

The school day starts at 9.00 am and finishes at 3.00 pm.

Morning break is at 11.00 am and offers time for a drink and a healthy snack.

Lunch is 12.30 to 1.15 pm. The school provide school meals, but Sixth Form students have their own kitchen and can make their own lunch if they prefer to.

Students in the Sixth Form do not have to wear the school uniform. They can wear their own choice of sensible clothes.

Students may be taught in small groups or individually, depending on the activity and their own learning needs.