



# WROCKWARDINE FLATS TELFORD



**Wrockwardine Flats** is a supported living flat scheme in Telford providing specialist support for up to 12 individuals with learning disabilities and / or autism.

- Self contained supported living apartments
- Supporting Male & Females Age 18+
- Providing a specialised service with fully trained and qualified staff
- Offering life skills enablement and promotion
- Staff on site 24/7 with bespoke support around individual need
- Supporting health, emotional wellbeing, choice, control, independence and self reliance
- In a beautiful location in the heart of the community

## WE SUPPORT A RANGE OF INDIVIDUALS:

- Learning disabilities
- Autism Spectrum Condition
- Age 18+
- Linked mental health needs
- Male and female
- We can support complex care

The aim of the service is to provide a flexible and pro-active model of support with the individual, their family, and support staff to ensure that they receive the appropriate care and support, in the right place, with the right professionals involved throughout the time they are in receipt of their support.

### KEY FEATURES

#### THE SERVICE COMPRISES OF:

-  **12 self contained flats**
-  **Each inc. bedroom, kitchen & bathroom**
-  **Ground floor/accessible options**
-  **Spacious gardens & community setting**
-  **Close to local amenities and services**
-  **Short distance from town centre**
-  **Local transport networks**

To find out more about the service or talk about other development opportunities please contact Richard Dalby:

**07394 561330**

**[richard.dalby@potens-uk.com](mailto:richard.dalby@potens-uk.com)**

**[www.potens-uk.com](http://www.potens-uk.com)**

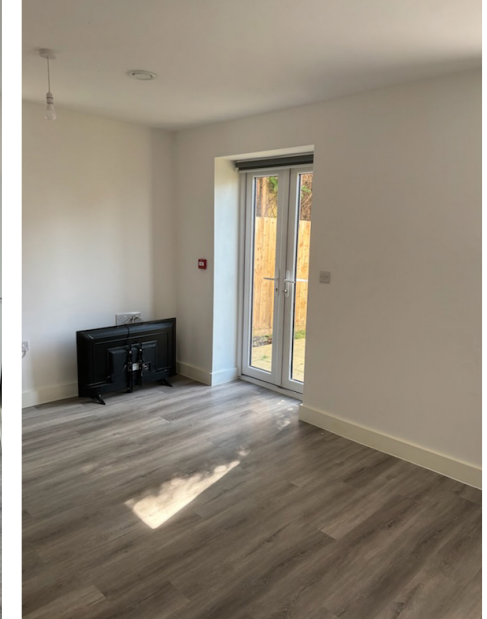


**@Potens\_UK**



**Potens-UK**





The photographs above are of our current vacant ground floor flat. This is ideal for someone who is working towards independence, to receive staff support with daily living skills, accessing the community independently and everything else that comes with living an independent life.

The flat is self-contained with their own kitchen, bedroom, bathroom and living area.

To find out more about the current vacancy please contact Richard Dalby:

**07394 561330**

**[richard.dalby@potens-uk.com](mailto:richard.dalby@potens-uk.com)**