

PAXTON HOUSE

39-41 CHESNUT GROVE,
BORROWASH, DERBYSHIRE



-  Registered Residential Care Home for up to 8 adults with a learning disability, autism and complex needs.
-  A large property with excellent facilities, located in Borrowash village in East Derbyshire.
-  Taking a person centred approach, support is organised to focus on agreed outcomes.
-  Well trained and value driven staff team that support an effective communication system and purposeful pathway.
-  Individual packages of support facilitating access to, and inclusion within their community.



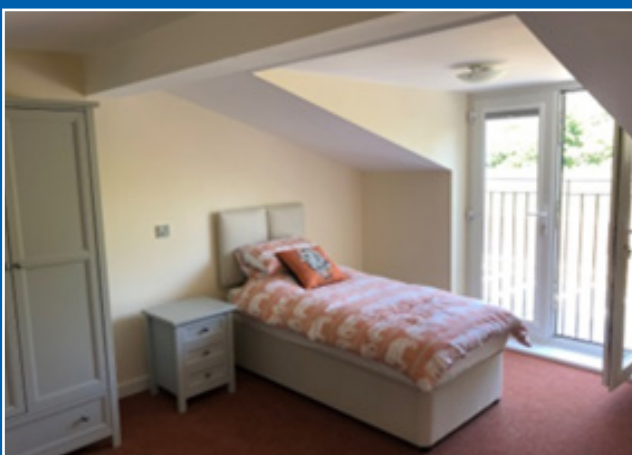
The service offers people with high support needs an individualised package of care and support in a stable environment, to build confidence, develop daily living skills and support to achieve outcomes.

Support is delivered by a skilled staff team with a minimum of NVQ level 2; learning disability & positive behavioural support accreditation; and training & guidance from our Behavioural Support & Therapy team.

Working with Nottinghamshire Council, Nottingham City Council, Derbyshire County Council and Derby City Council.

BENEFITS OF LIVING AT PAXTON HOUSE

- Positive environment
- Promoting independence and choice
- Skilled and well trained staff
- Community involvement
- Personalised support
- Person Centred
- Active Support
- Individual goals and outcomes



Inspected and rated

Good



WHAT OUR CQC REPORT SAYS

SAFE

Some people went out independently and agreements were in place to promote independence and the staff also considered risks and actions to take if people were late returning home or missing. One person told us, "I always let the staff know where I am and when I'm going to come back. They have a number to call if they are worried, but I know how to keep safe."

CARING

Relatives told us staff were kind, caring and compassionate. One relative said, "The staff are very caring and very responsible and make sure they are safe and well." They told us that staff involved them with making decisions, setting goals and planning care to ensure people were supported the way they wanted.

EFFECTIVE

The staff felt they had the necessary skills to support people and had been given opportunities to get to know people and further training. One member of staff told us, "We have a lot of opportunities to go on training here. It's good because we all do the same training and this helps with how well we work together."

RESPONSIVE

A social care professional told us, "The staff are very proactive and getting people out and about and involved." People enjoyed visiting friends, going to local social groups and visits to places of interest as well as enjoying meal outs and shopping. People were also supported to attend educational courses at college and had opportunities to carry out voluntary work

WELL-LED

One member of staff told us, "We have team meetings where we can talk about what's happening and any changes, but it's focused on people living here. We also have time each morning before people get up to talk about what we can do better and make different plans."

About Potens

Potens provides a range of services for adults and children with learning disabilities, mental health diagnosis and acquired brain injury; including those on the autistic spectrum and those with Korsakoffs Syndrome.

Service types include residential care homes; single and multiple occupancy supported living; domiciliary care services, respite and short-breaks and day opportunities nationally.

Our service are regulated by the Care Quality Commission (CQC; the Care and Social Services Inspectorate for Wales (CSSIW); or the Regulation and Quality Improvement Agency (RQIA) in Northern Ireland.

Regulators carry out inspections to ensure we comply with their regulations and provide high quality care and support to each person.



CONTACT:

Area Manager: Dave Ridley

Mobile: 07886 884 250

Mail: dave.ridley@potens-uk.com

Address: 39-41 Chestnut Grove,
Borrowash, DE72 3JP

Tel: 01332 667 848

paxtonhouse@potens-uk.com

