






CECIL COURT

15-33 Cecil Court, Langley Moor, Durham

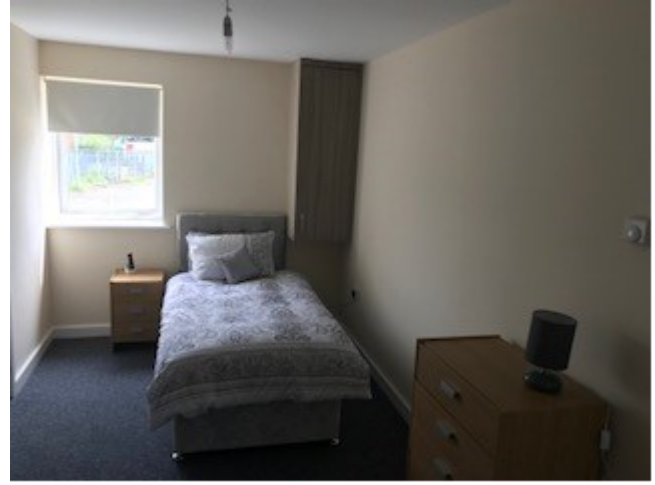


-  18 bed single occupancy accommodation for adults with mental health needs in the heart of Durham.
-  Service provides support enabling individuals to maintain their own tenancy and access local inclusive community activities.
-  Adopting a person centred approach, the team enable independence: focused on the recovery star outcomes.
-  Ideal placement for people moving from residential settings to increase independence in a supportive environment
-  Staffed 24 hours a day with 1:1 support shaped around needs— with a Key Worker model and consistent team.



Offering people with mental health needs an individual package of support in an enabling environment, to build skills , develop confidence and support to their achieve recovery star outcomes.

The service fits into a wider pathway of recovery services for people with mental health issues in Durham supported by experienced staff team trained in all aspects of mental health and recovery approaches



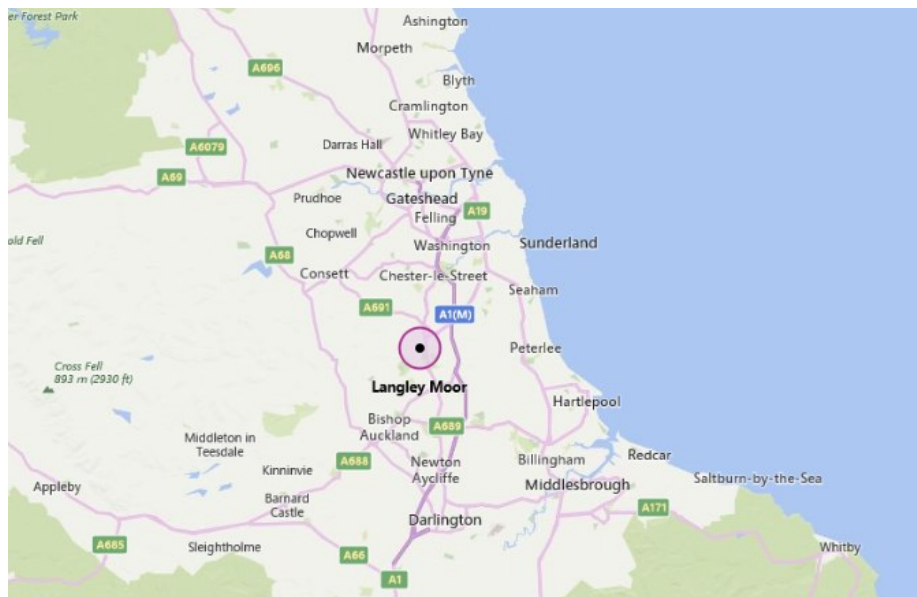
The service is built upon our strong track record, extensive experience and approach -working in partnership with CMHT's.



Supported by internal expertise within the mental health field and sharing best practice and ideas with our other services locally.



Strength based practice model, incorporating the recovery model approach - building support and promoting independence .



For further information or talk through referrals contact:

Kelly Sanders on 0191 398 0032

www.potens-uk.com