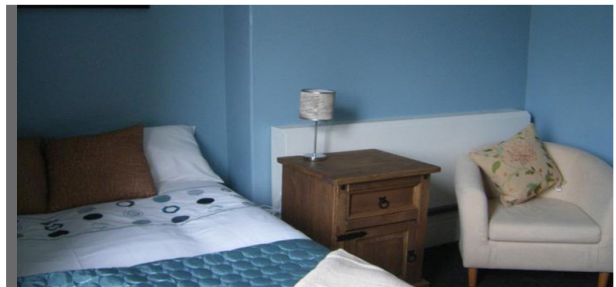
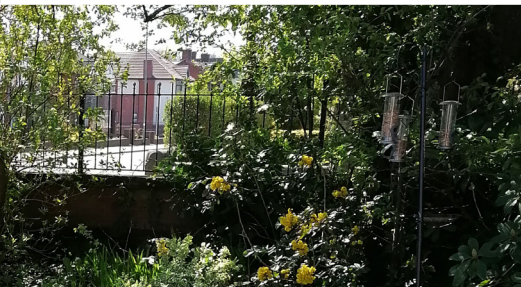




WALMERSLEY ROAD
BURY
GREATER MANCHESTER
BL9 6NX



Walmersley Road is a residential service supporting 7 individuals in a large 6-bedroom detached property which also provides 1 rehabilitation flat. We Support effective communication, activities of daily living, encourage independence and focus on outcomes.

- The home is close to local GP surgery and has excellent transport links in to the town centre and surrounding areas.
- Walmersley Road is close to the town center and community activities of Bury, and a range of amenities, with transport link to major cities such as Manchester

WE SUPPORT A RANGE OF INDIVIDUALS:

- Autistic spectrum disorders
- Asperger Syndrome
- Learning disabilities
- Mental Health needs
- Behaviors that challenge.
- Male and Female
- Ages 18 to 65

Accredited with the National Autistic Society as providing appropriate support for individuals on the autistic spectrum, we provide 24/7 support.

KEY FEATURES

-  **6 Bedrooms & 1 Rehabilitation Flat**
-  **Personalised room & décor**
-  **Front & rear gardens with BBQ facilities**
-  **Communal lounge**
-  **Communal kitchen**
-  **Short walk from local amenities**
-  **Excellent local transport networks**

To arrange a viewing or find out more about the service please contact:

JANE HYDE

Registered Manager

jane.hyde@potens-uk.com

0161 761 2484

www.potens-uk.com



@Potens_UK



Potens-UK

